



Premier | Sotheby's
INTERNATIONAL REALTY

PremierSothebysRealty.com

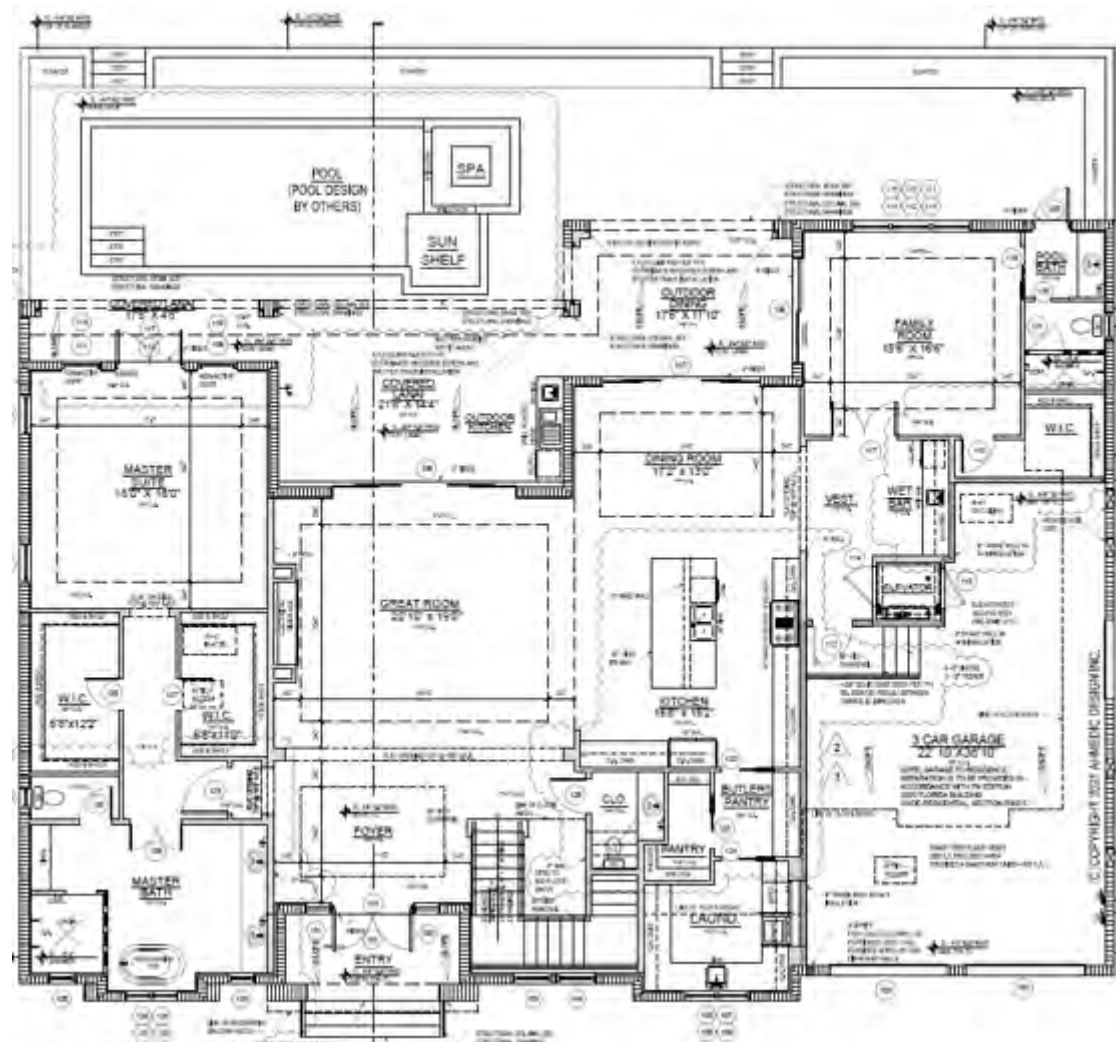
LYKOS
THE LYKOS GROUP
DESIGN • BUILD • REMODEL

SFA
South Florida Architecture
(239) 777-0616
www.SFAArchitectureinc.com

625 Crescent Street

MARCO ISLAND, FLORIDA

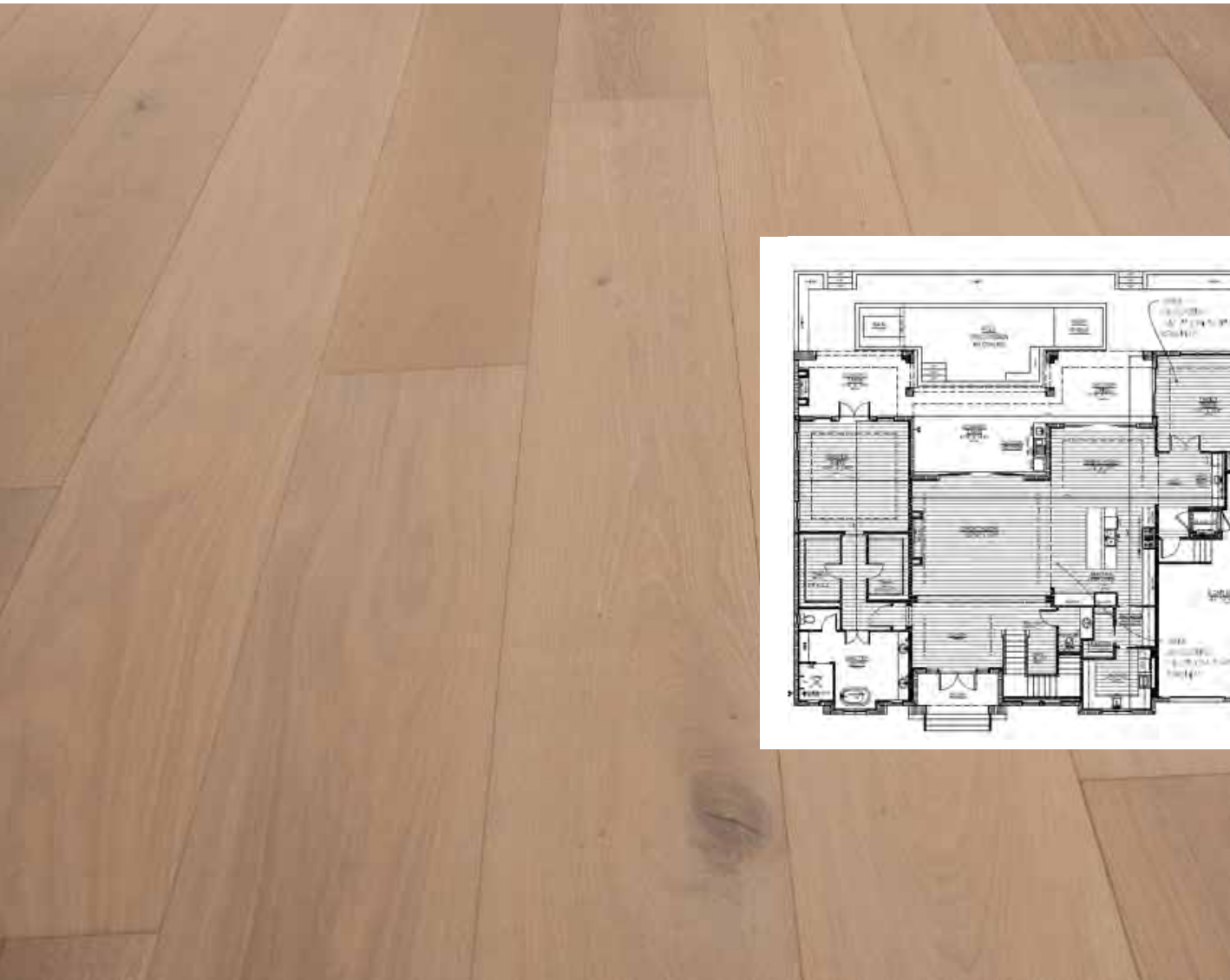
First-Floor Floor Plan



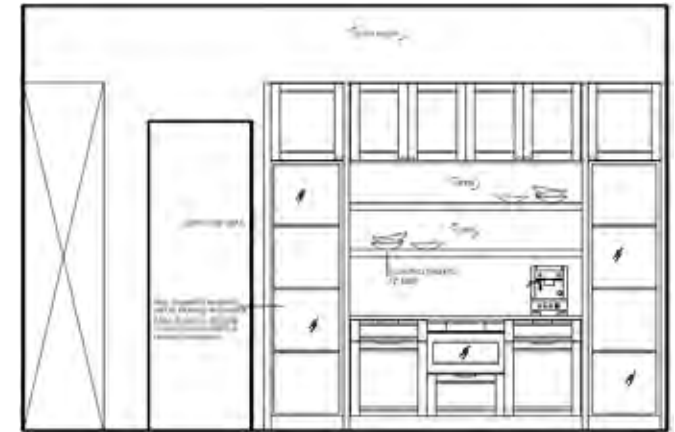
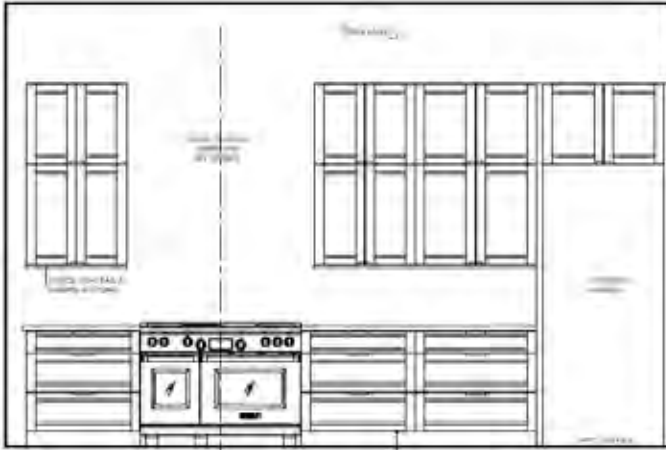
Second-Floor Floor Plan



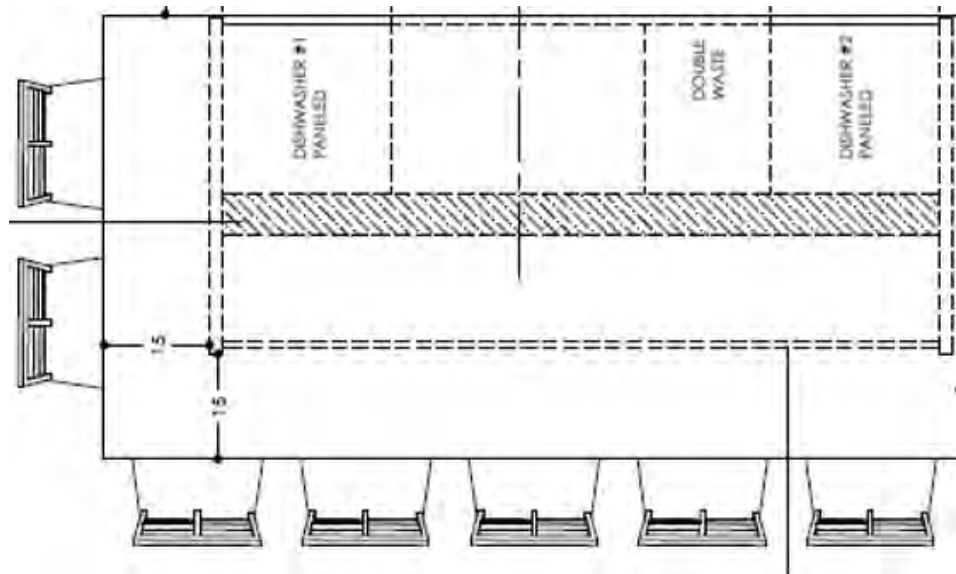
Flooring



Kitchen Perimeter



Kitchen Island



Kitchen Appliances



Panel ready



Panel ready

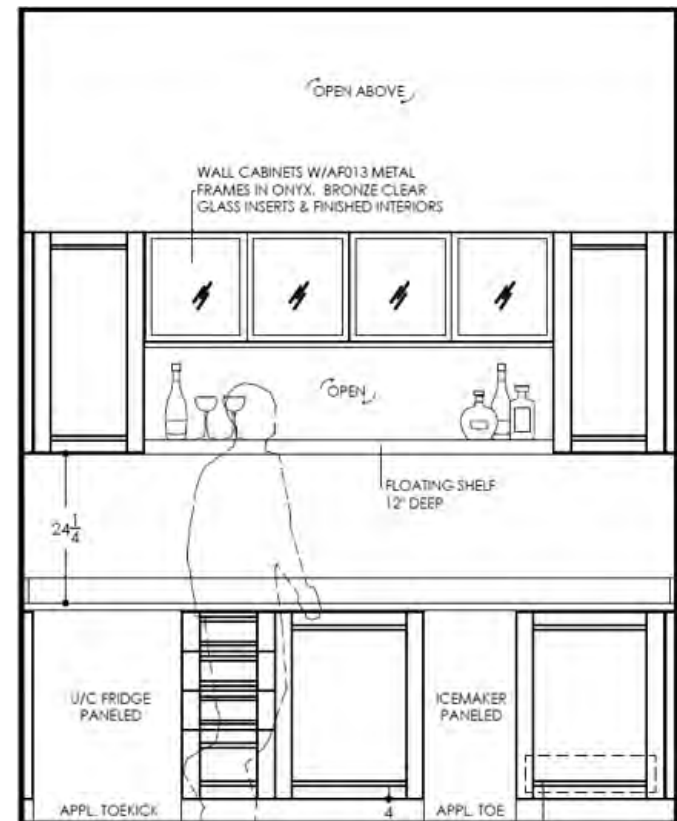


Panel ready x2

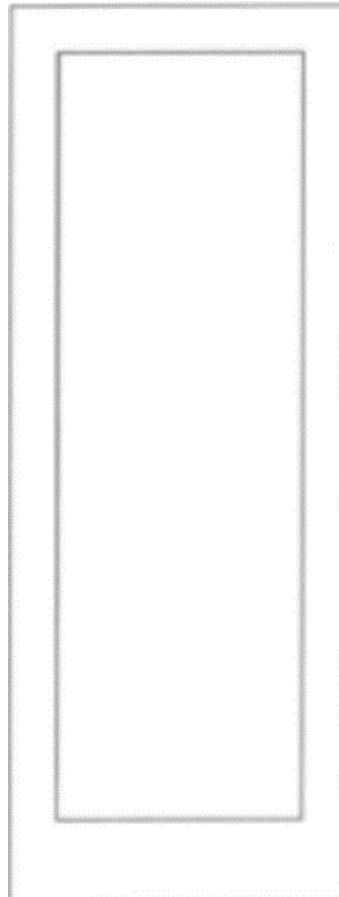
Kitchen Material Finishes



Wet Bar



The Details

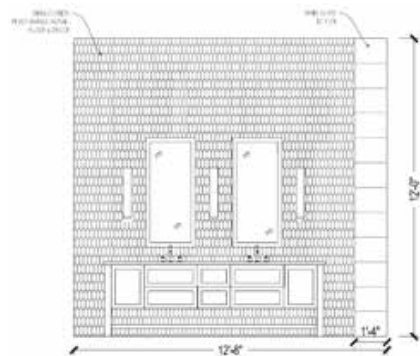


Downstairs Powder Bath



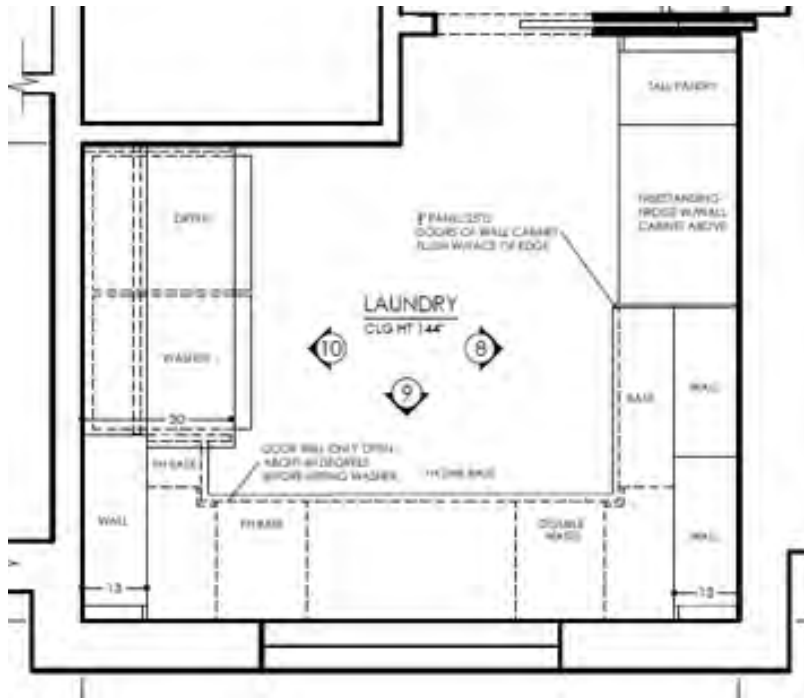
Master Bath

Floor Plan



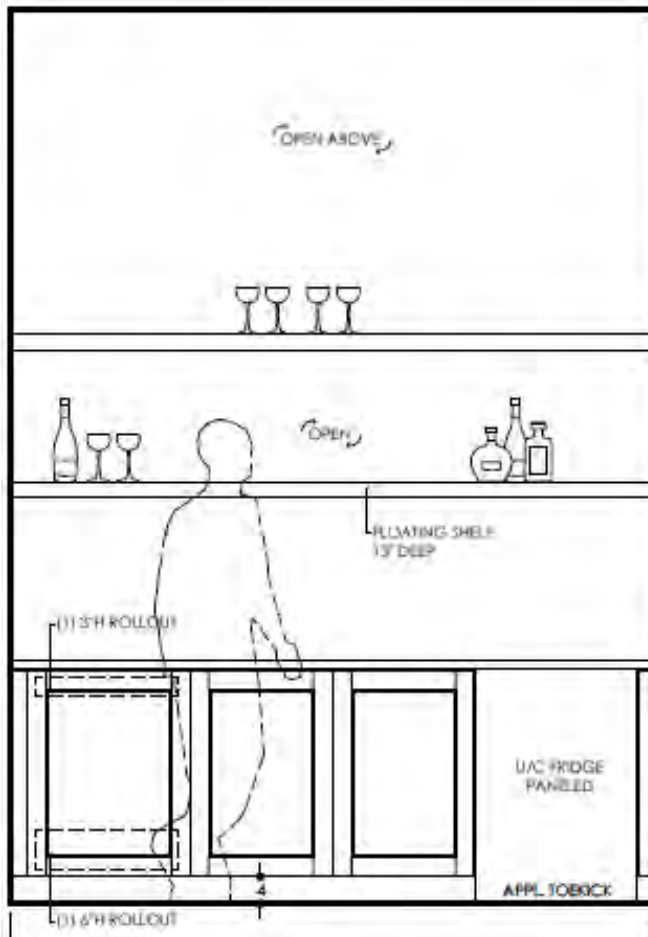
Laundry Room

Floor Plan



Upstairs Wet Bar

Floor Plan

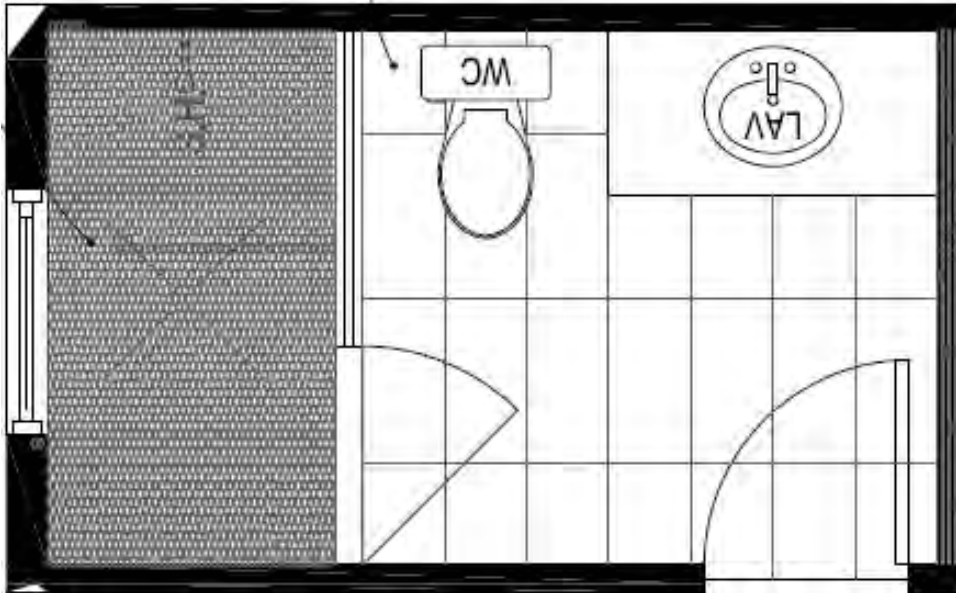


Upstairs Powder Bath



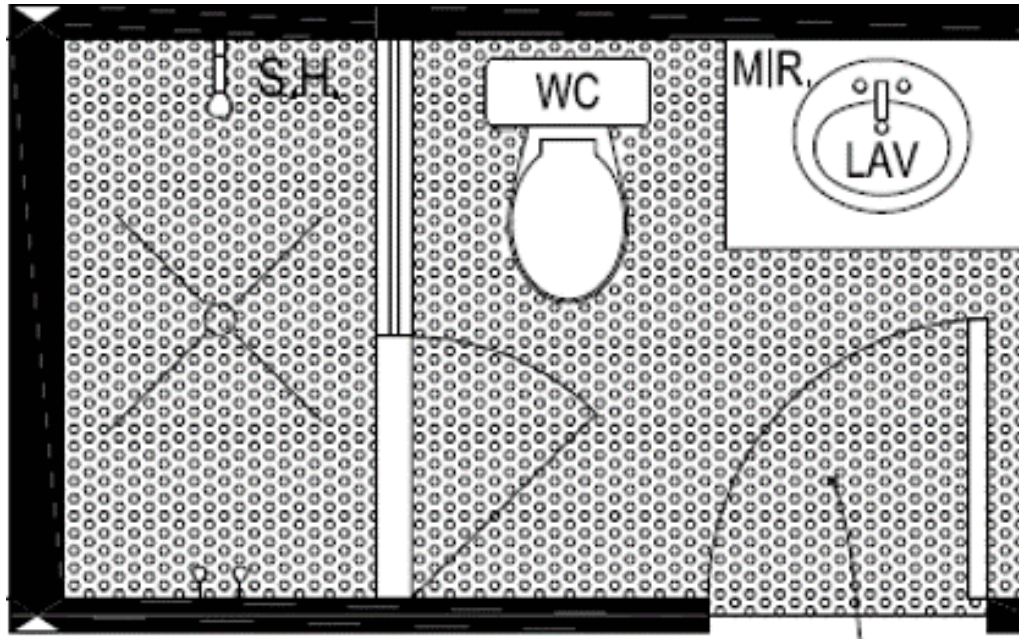
Bath 2

Floor Plan



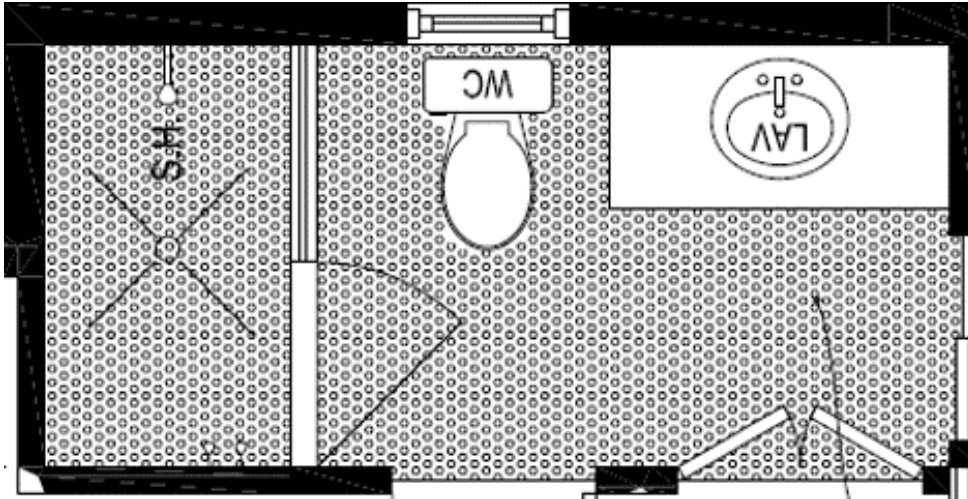
Bath 3

Floor Plan



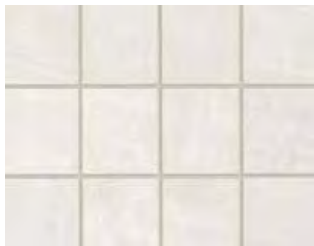
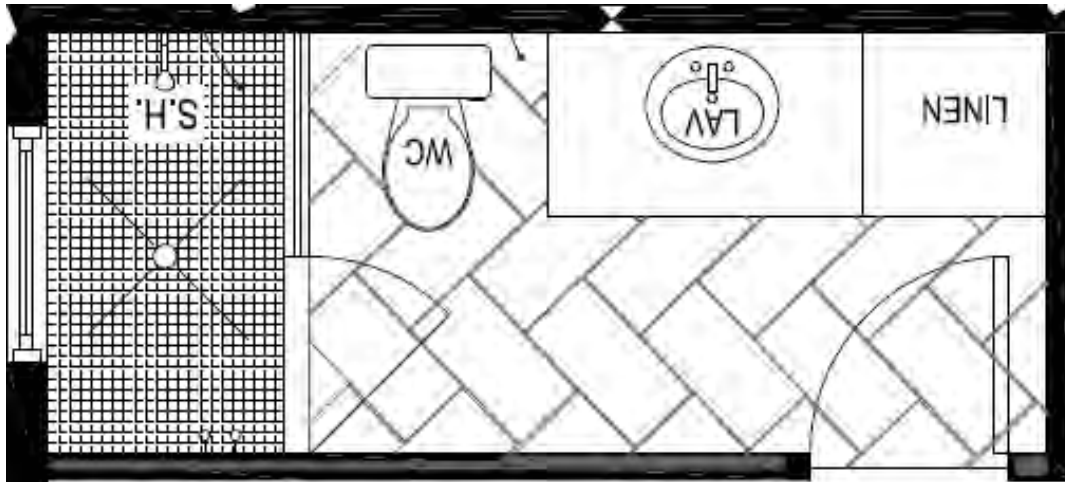
Bath 4

Floor Plan



Bath 5

Floor Plan



Pool Bath



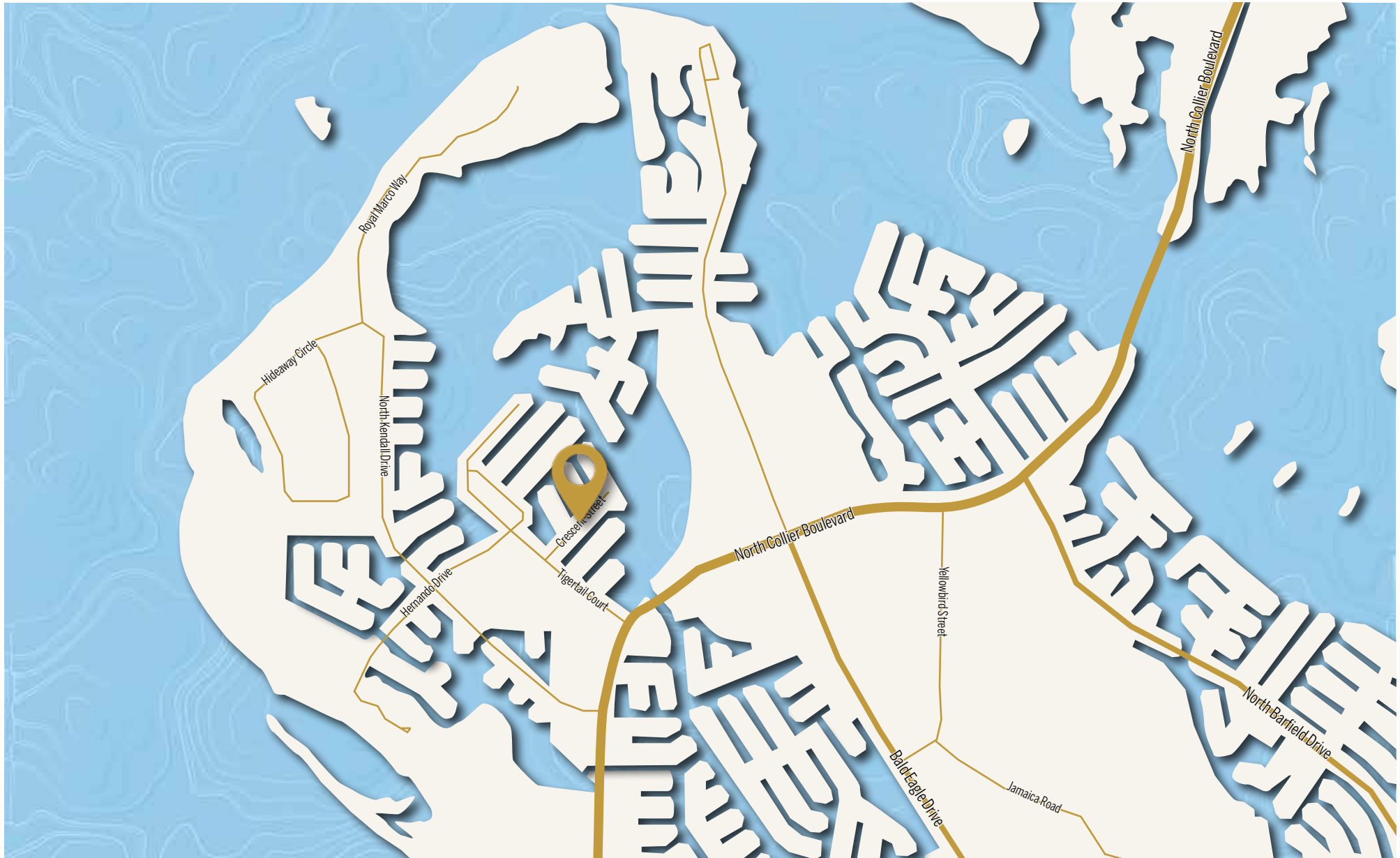
Outdoor Living



625 Crescent Street Aerials



Map



Feature Sheet

This marvelous residence on Crescent Street showcases our versatility with the design and execution of coastal contemporary homes throughout Marco Island. Realized by a team of seasoned architects, interior designers and landscape artists, this home boasts a seamless combination of both form and functionality.

- Five bedrooms with den
- Six full and two half baths
- Wide-plank European white oak engineered floors
- LED lighting and lighting control system
- Audio, video and security systems
- Pool with integral spa and gas heater
- Sub-Zero® and Wolf® appliances
- Tongue-and-groove cypress exterior ceilings
- Impact-rated Andersen® 400 Series wood windows
- Custom iron front entry door
- Covered lanai with motorized roll-down screens and hurricane shutters
- Three-car garage

Situated on a waterfront lot, this 7,293-square-foot residence differentiates itself through bold architectural features such as the porch above the entry, a three-level stairway and custom ceiling millwork. The covered lanai holds a fully equipped outdoor kitchen, dining and seating area, as well as tongue-and-groove cypress exterior ceilings.



Paul Arpin

Global Real Estate Advisor, REALTOR®

239.877.4450

Paul.Arpin@PremierSIR.com

Premier | **Sotheby's**
INTERNATIONAL REALTY

PremierSothebysRealty.com