



Premier | Sotheby's
INTERNATIONAL REALTY

PremierSothebysRealty.com

LYKOS
THE LYKOS GROUP
DESIGN • BUILD • REMODEL

SFA
South Florida Architecture
(239) 777-0616
www.SFArchitectureinc.com

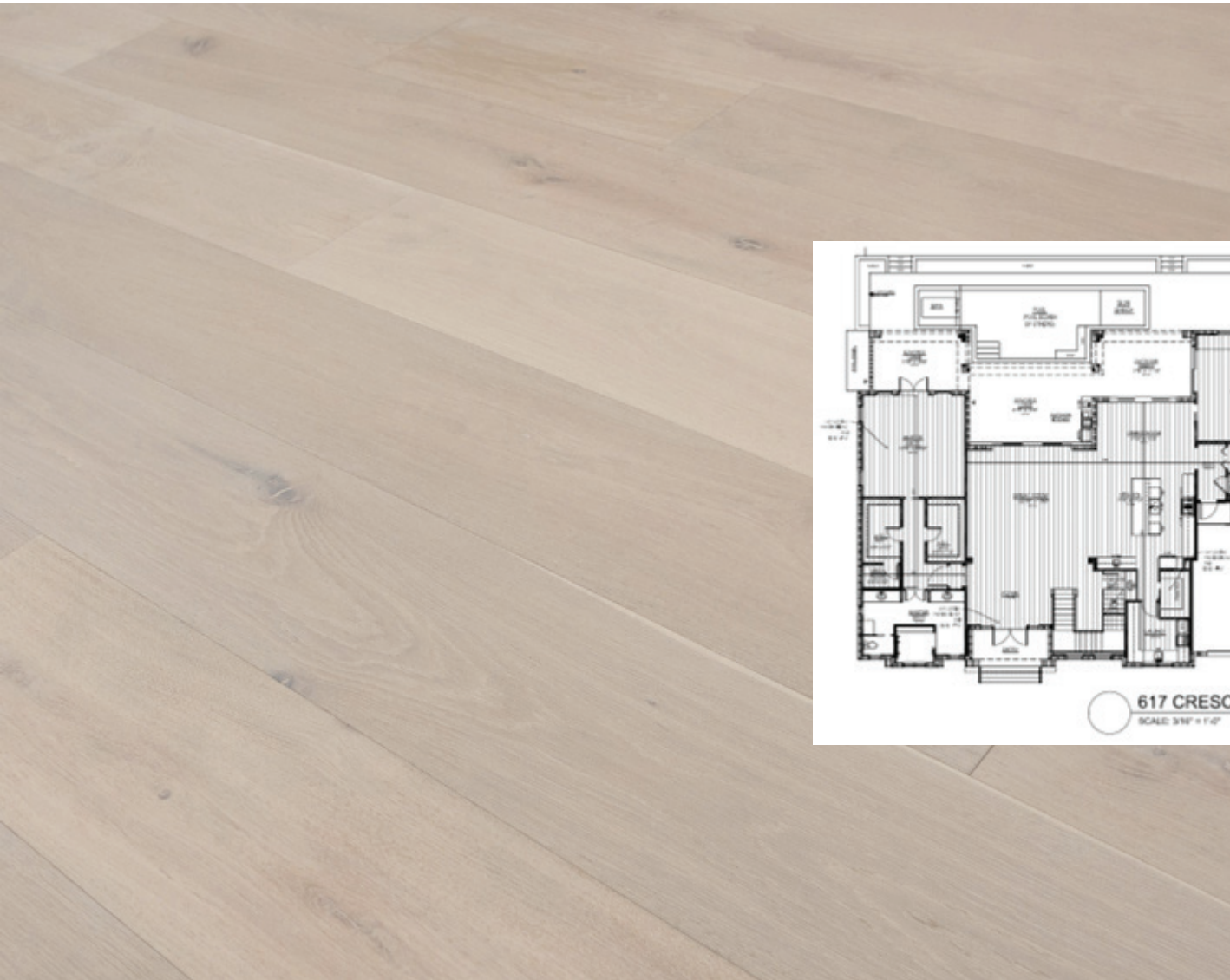
617 Crescent Street

MARCO ISLAND, FLORIDA

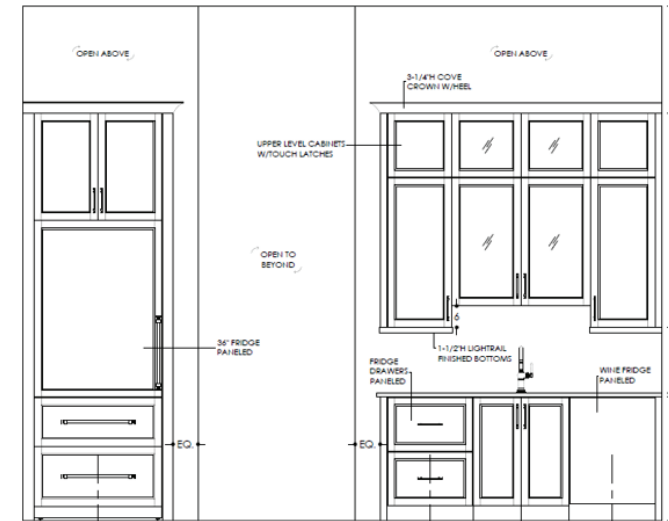
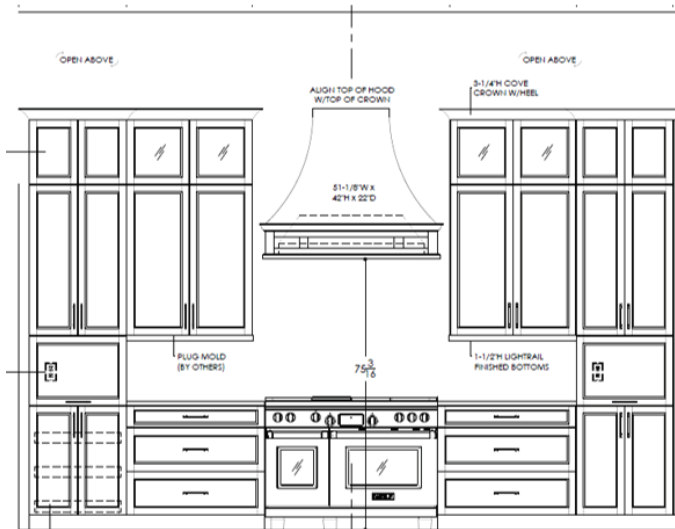




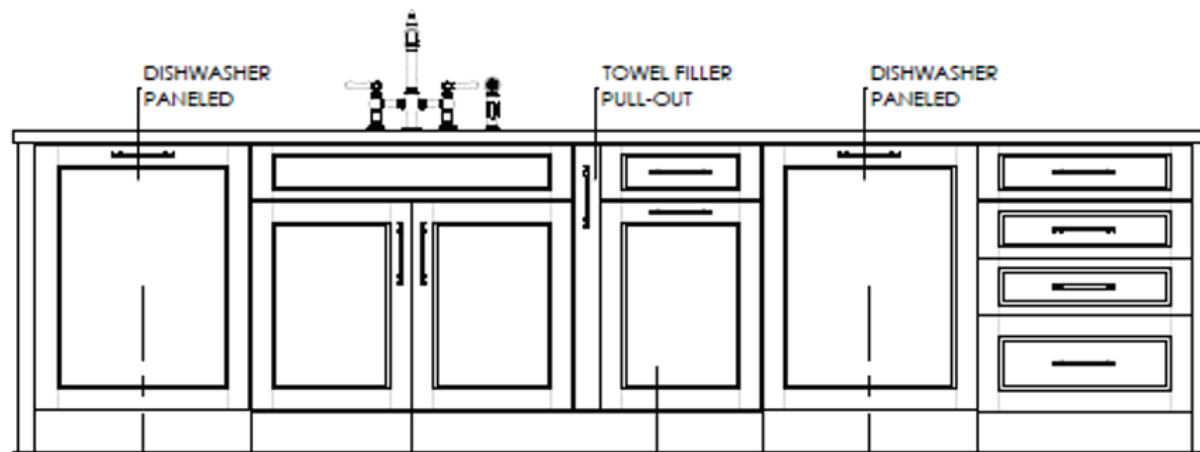
Flooring



Kitchen Perimeter



Kitchen Island



Kitchen Appliances



Panel ready

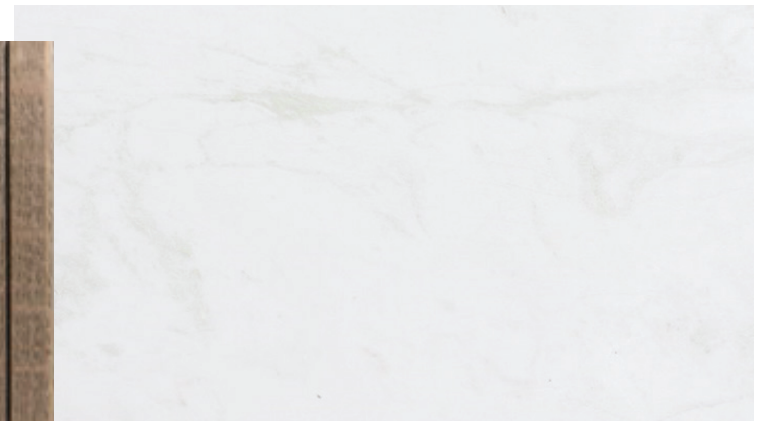


Panel ready

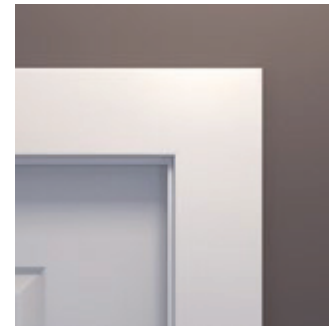
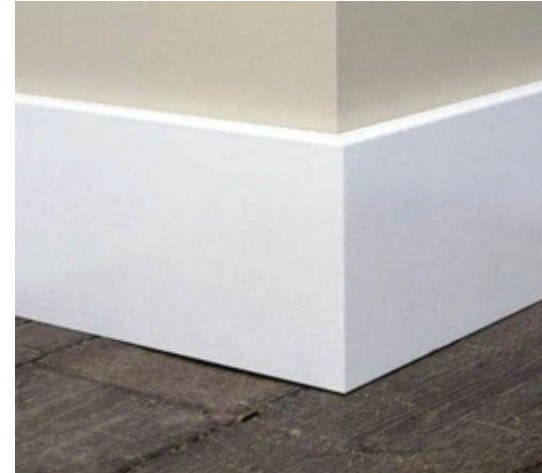
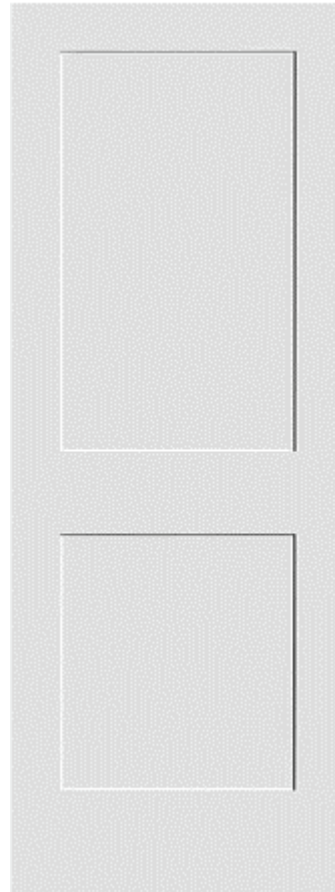
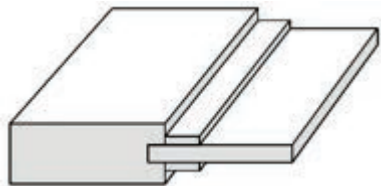
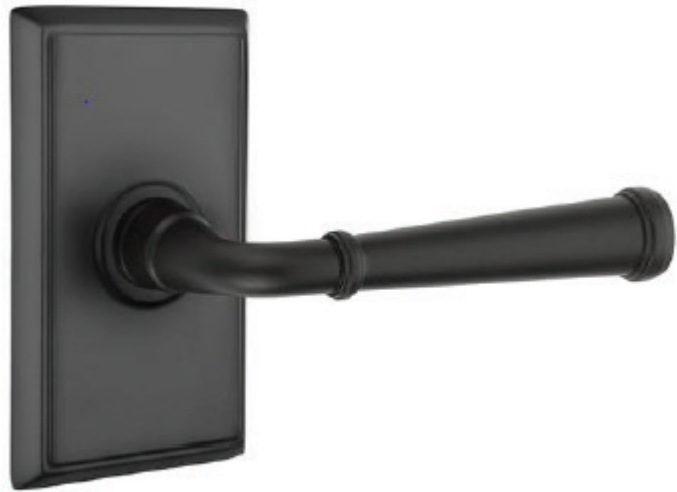


Panel ready

Kitchen Material Finishes

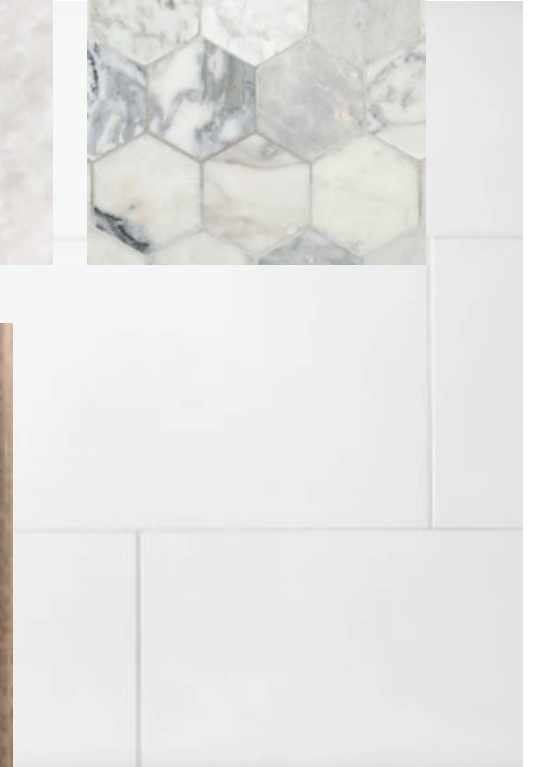
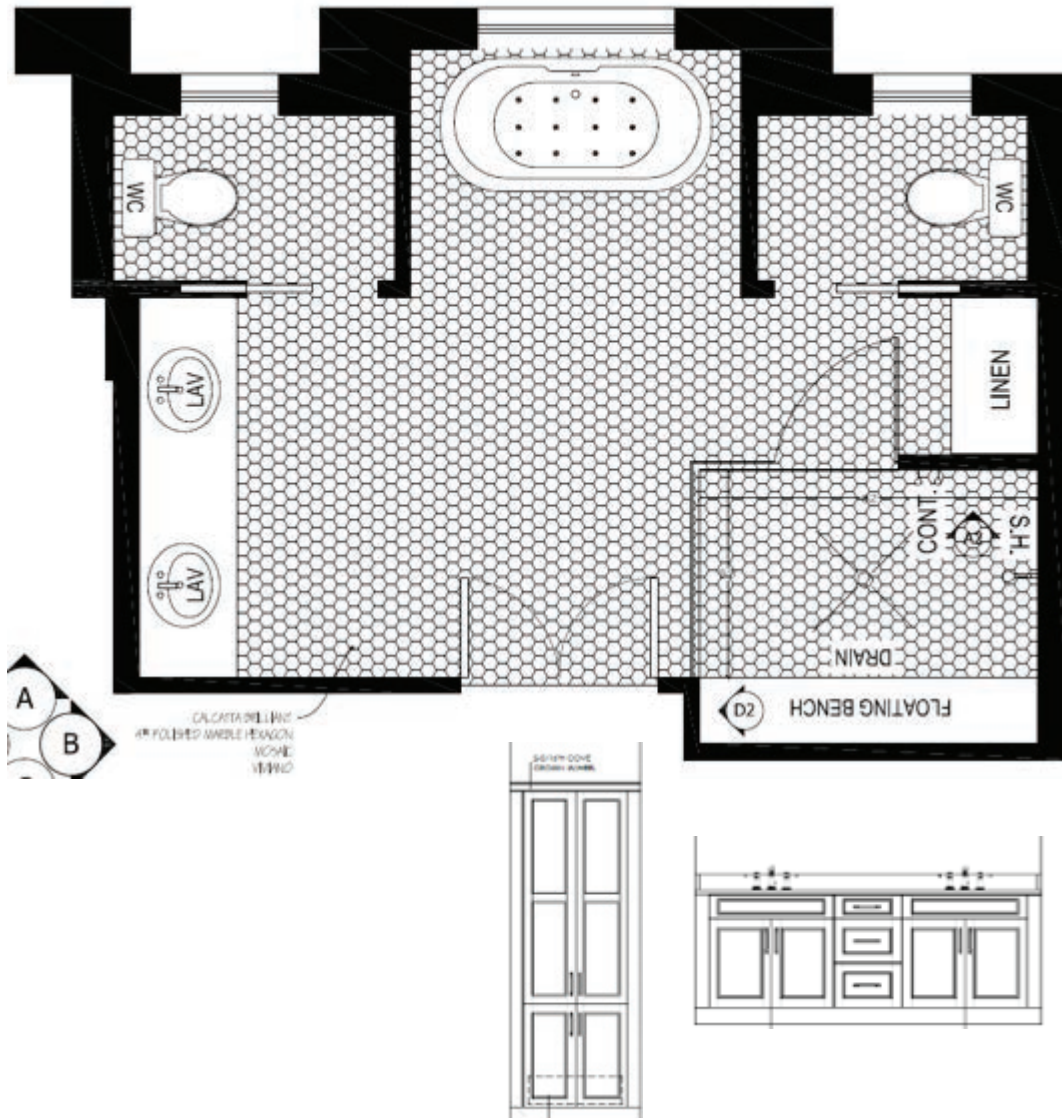


The Details



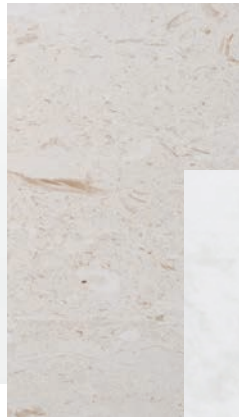
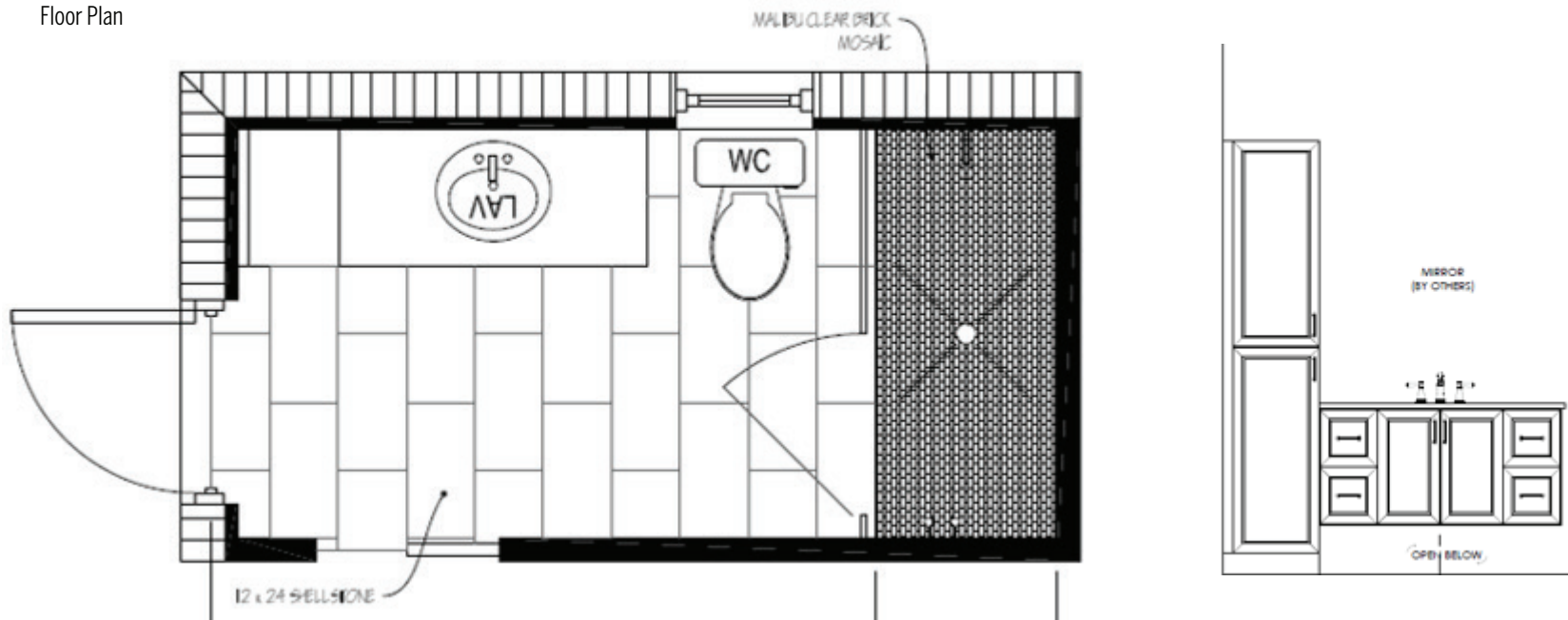
Master Bath

Floor Plan



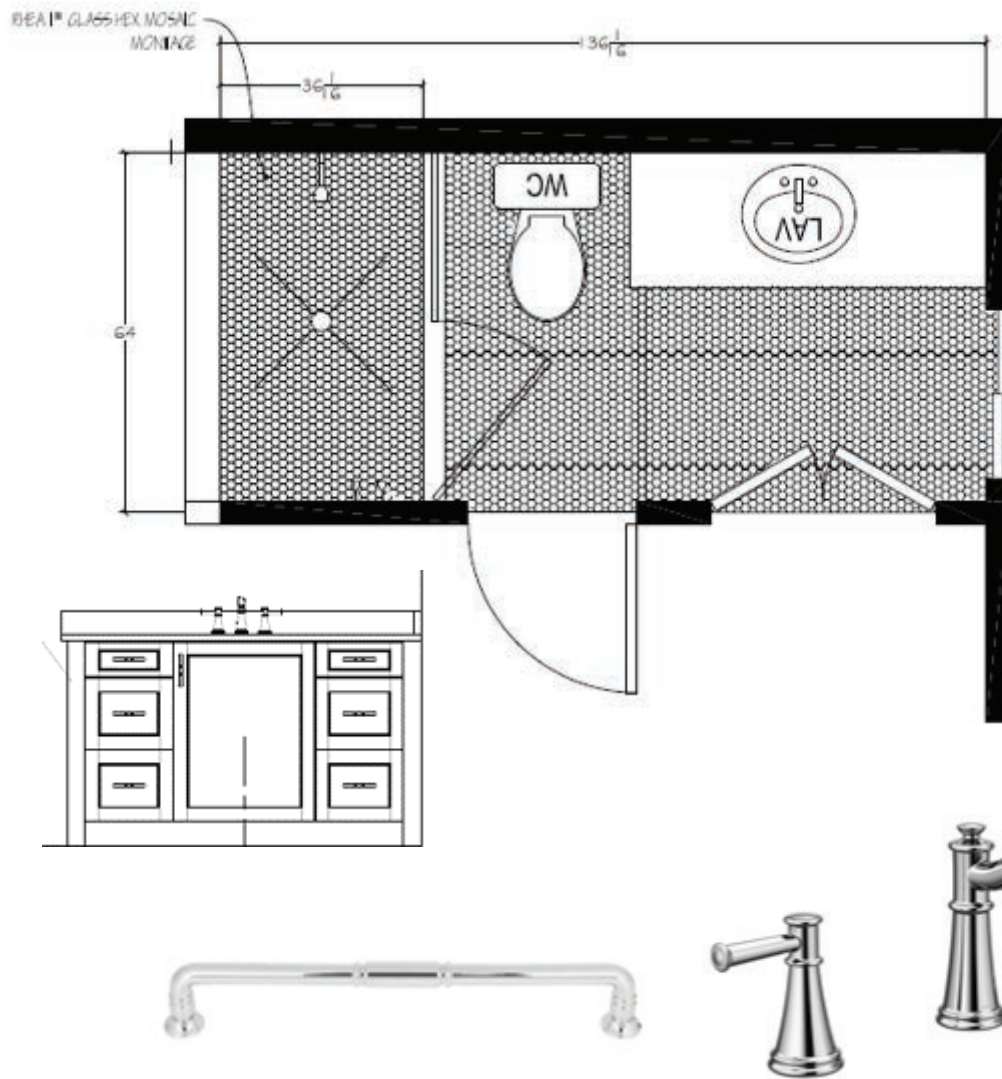
Pool Bath

Floor Plan

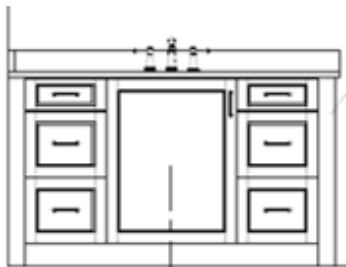
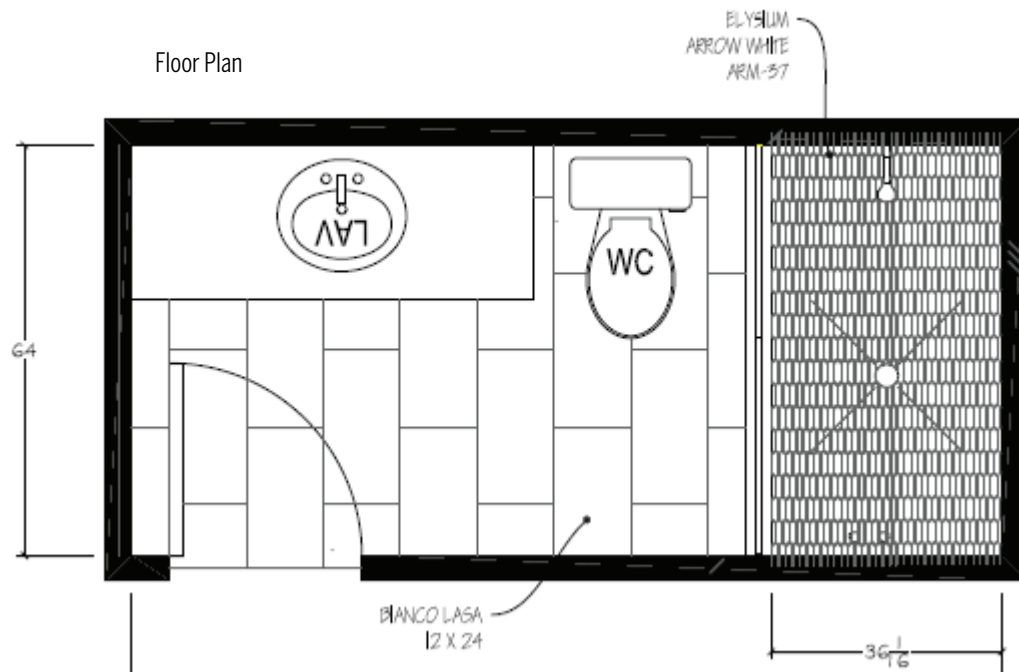


Bath 3

Floor Plan

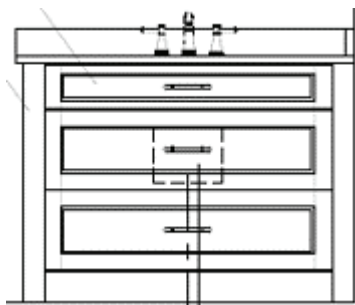
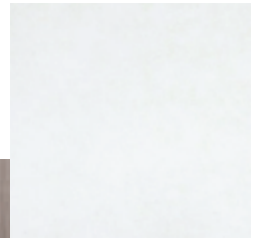
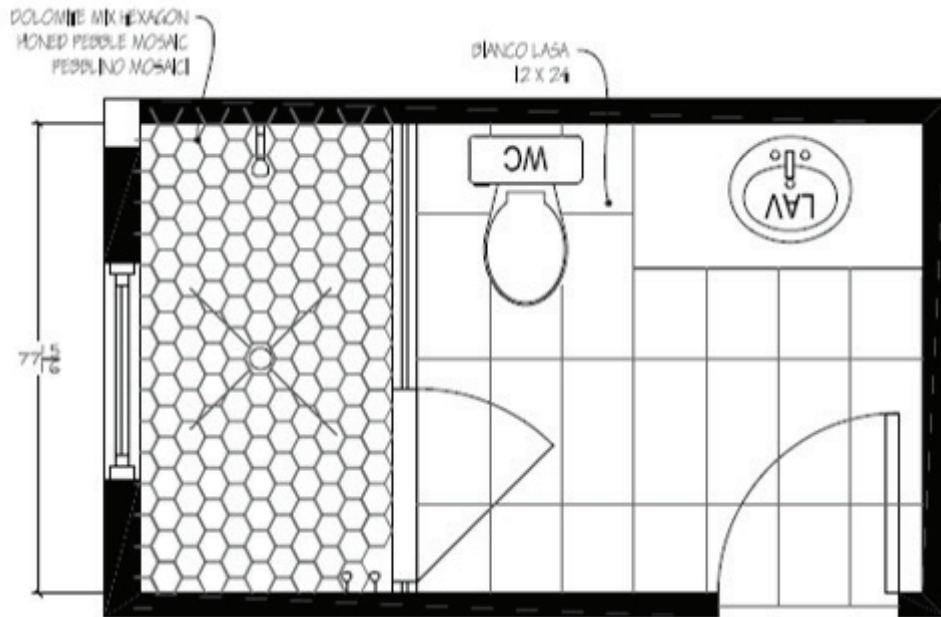


Bath 4

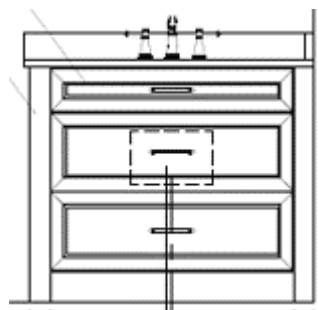
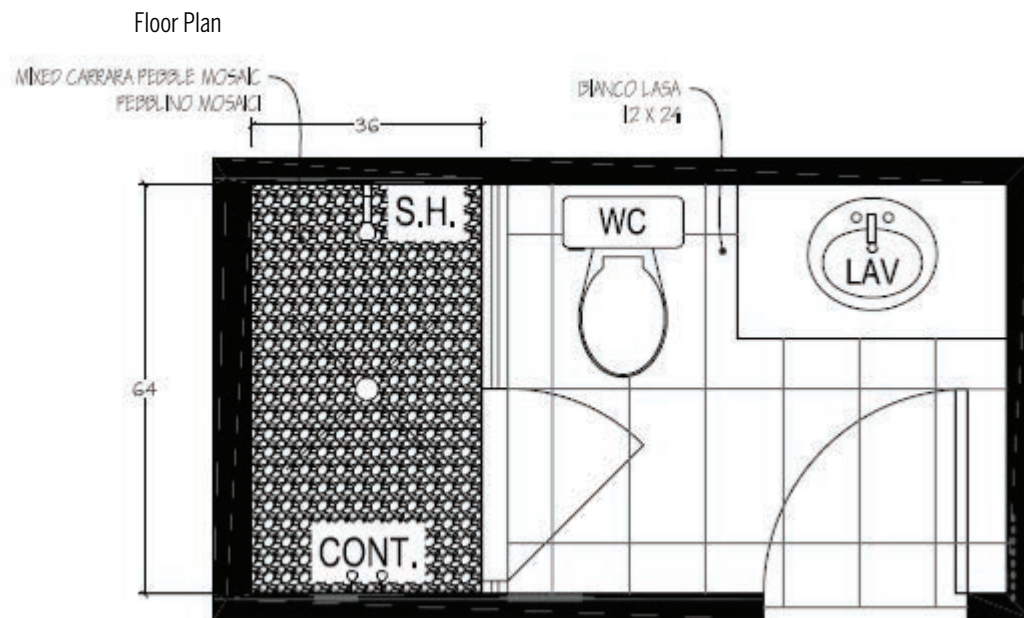


Bath 5

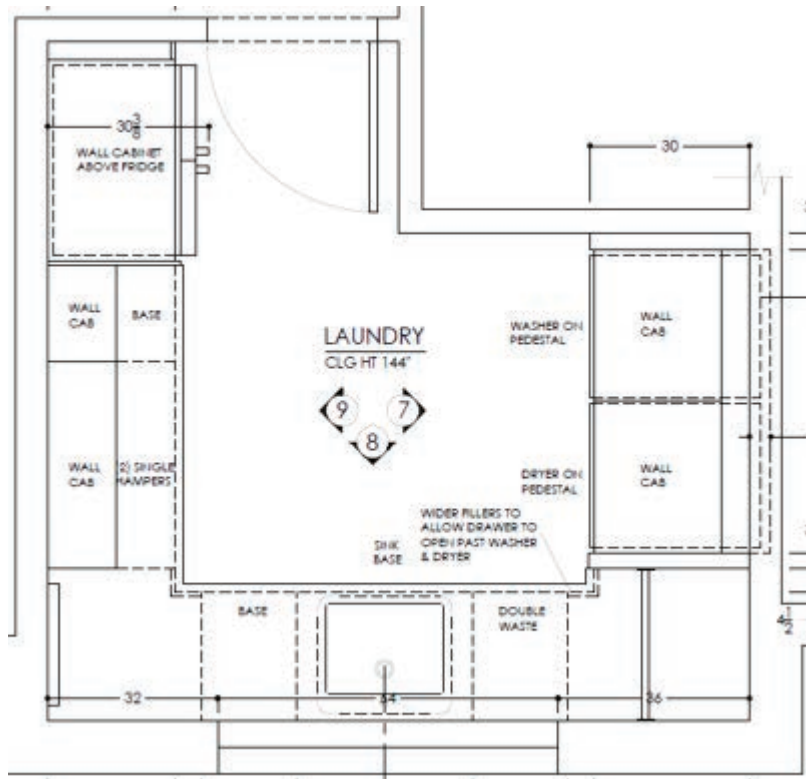
Floor Plan



Bath 6

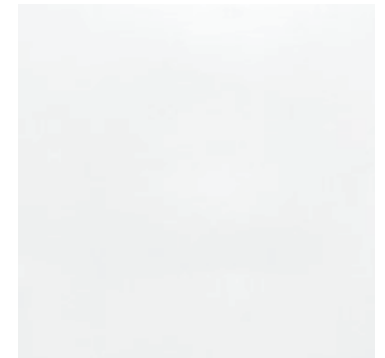
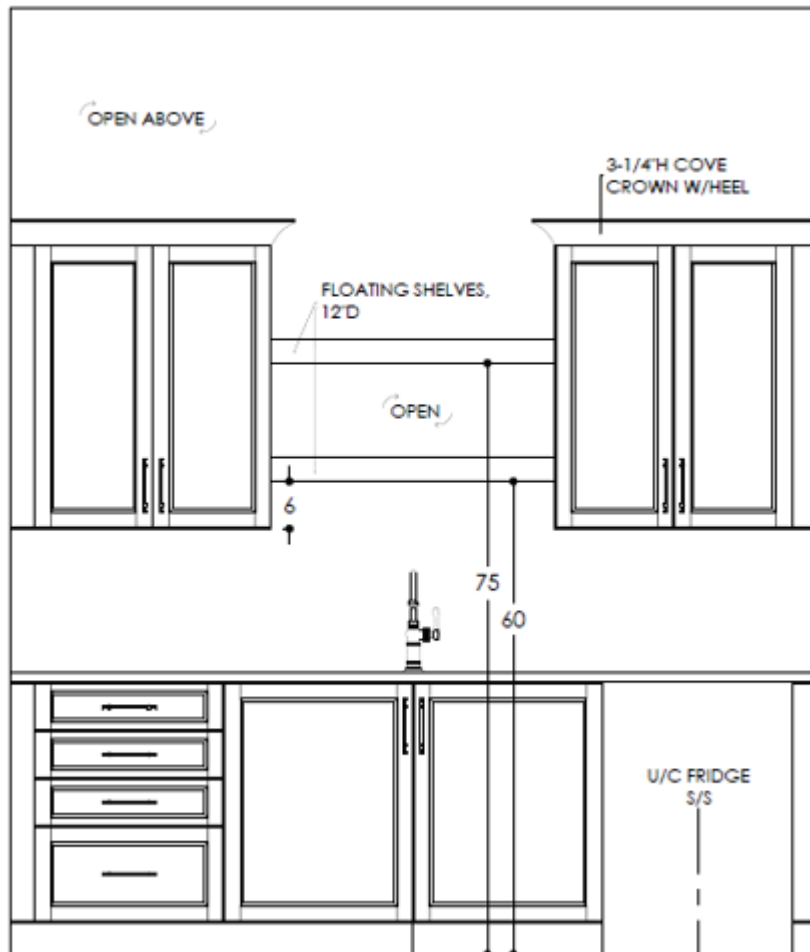


Floor Plan

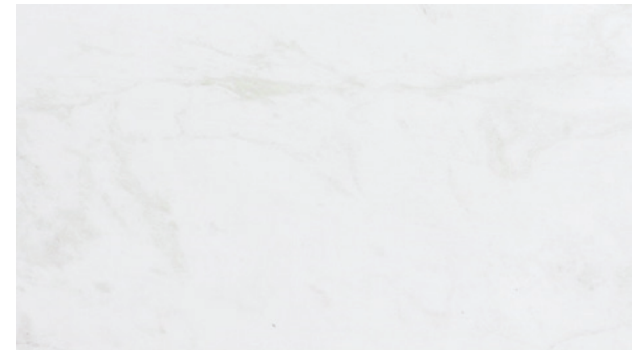


Upstairs Wet Bar

Floor Plan

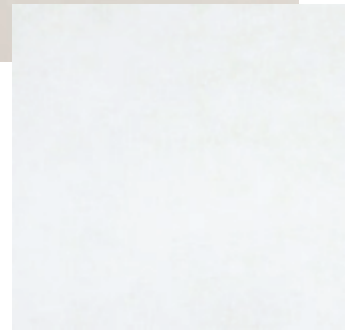
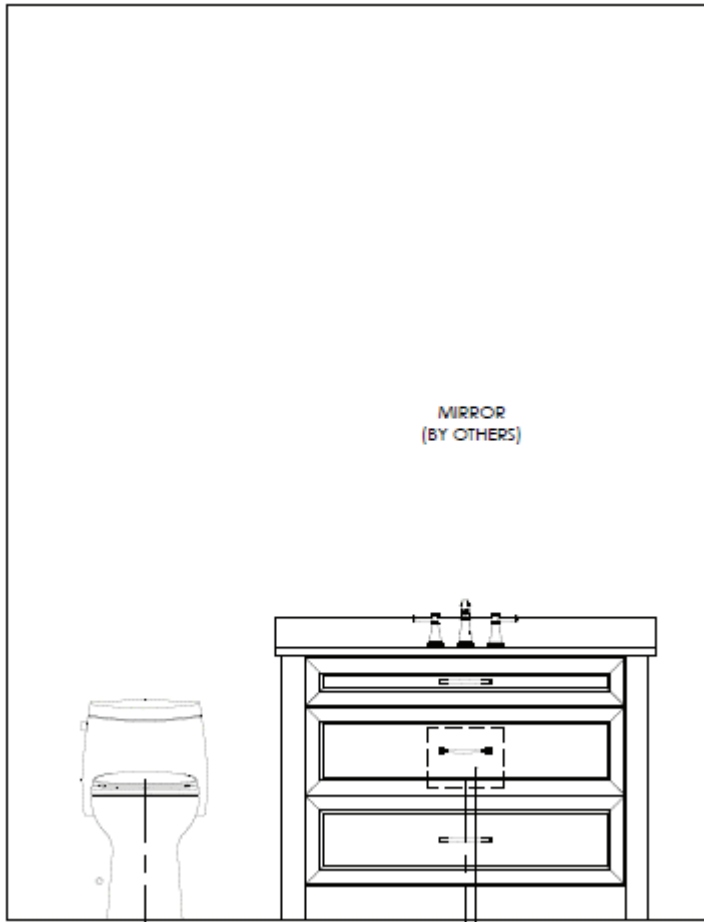


Downstairs Powder Bath

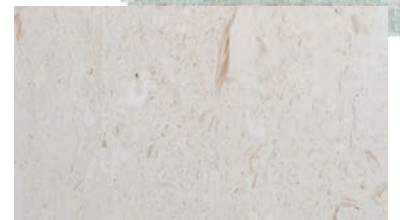
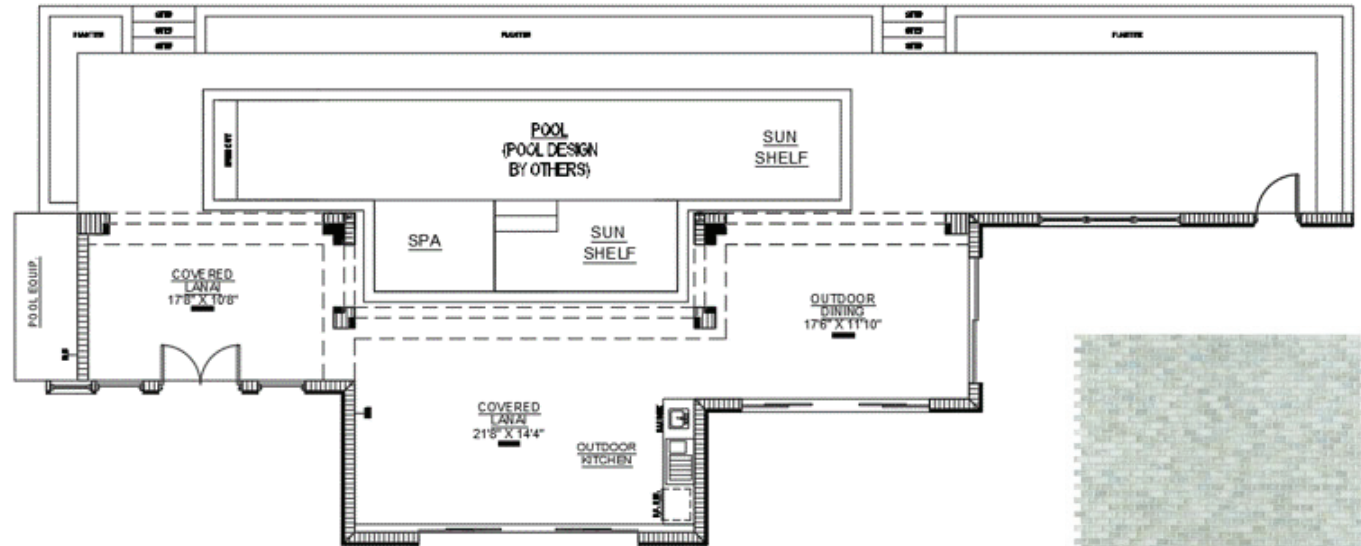
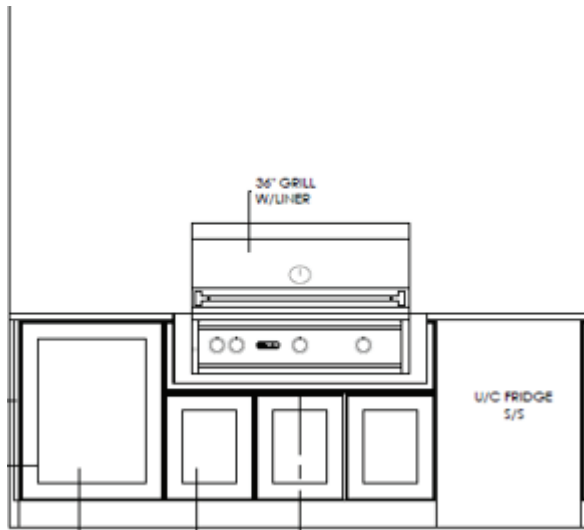


Upstairs Powder Bath

Floor Plan



Outdoor Living



Map



Feature Sheet

5,428 square feet of living space

7,235 total square feet

Ready for move-in 2023

OUTSIDE OF HOUSE

- Cement tile roof
- Tongue-and-groove cypress exterior ceilings
- Custom stucco and precast details
- Andersen 400 Series wood windows, Energy Star Certified, impact rated glass
- WinDoor sliding glass doors with impact-rated glass
- Custom iron front entry door with impact-rated glass
- In-ground pool with integral spa and gas heater
- Shellstone tile pool deck
- Paver driveway
- Covered lanai with motorized roll-down hurricane shutters and screens
- Outdoor kitchen
- Custom landscape package with lighting package

INSIDE OF HOUSE

- Icynene spray foam insulation at the roof and walls
- LED lighting throughout
- Lighting control system
- Kohler faucets and fixtures
- AV system
- Security system
- 3 AC systems with linear grills
- On-demand gas water heaters
- Gas fireplace
- Wide plank wire European white oak engineered wood floors
- Marble tile at baths
- Solid core interior doors
- Poplar interior trim
- Custom closet storage
- Custom ceiling millwork
- Custom oak stairway
- Custom built-ins
- Custom-painted wood cabinetry
- Stone/quartz countertops
- Sub-Zero and Wolf appliances
- Elevator
- Second-floor laundry room
- Second-floor family room
- Epoxy-coated garage floor

617 Crescent Street Aerials



617 Crescent Street Aerials





Paul Arpin

Global Real Estate Advisor, REALTOR®

239.877.4450

Paul.Arpin@PremierSIR.com

Premier | **Sotheby's**
INTERNATIONAL REALTY

PremierSothebysRealty.com

Thomas Lykos

General Contractor/Builder

239.594.8510

Thomas.Lykos@LykosGroup.com

LYKOS
THE LYKOS GROUP
DESIGN • BUILD • REMODEL